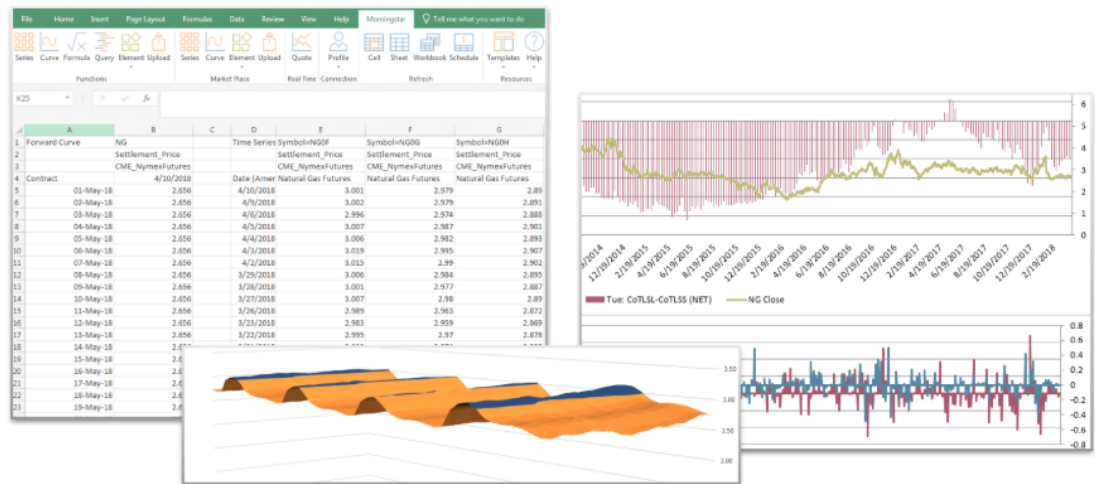


Enterprise Data Management: Add-In

Consolidating and analyzing data for customizable visualization

Morningstar Commodity's Marketplace Excel **Add-In** is a high-powered tool that brings consolidated market, real-time, and proprietary data alongside Morningstar's rigorous quality checks into Microsoft Excel using AWS services and cloud-based integration.

The Add-In allows rapid data retrieval and upload abilities to expedite and support data consolidation, visualization, and analysis. Built for clients who require fast access to large amounts of data over global networks, the Add-In provides an easy-to-use response to solving custom calculations and data validation.



Easy-to-use interface

Hit the ground running with the streamlined, straightforward user interface. The Add-In allows users to navigate easily through its various functions to visualize data and perform complex calculations.

Fast data retrieval

Search our databases quickly to locate, then remember, a symbol for a faster and more efficient workflow. Users can also query real-time and delayed data quotes in Microsoft Excel using native functions.

Custom formulas

Easily manipulate time-series data into actionable information. The Add-In gives users the flexibility to create their own formulas or choose from the built-in formula library of simple operations and dynamic functions.

Access to 300+ providers

Connect to our full database of over 300+ data providers with access to real-time and historical data, as well as proprietary and global exchange data sources. A complete list of data sources can be found on our website.

Proprietary data upload

Uploaded proprietary data sets and get instant status reports on the upload jobs. Easily retrieve this data in the Add-In or query data sets using Morningstar APIs. Every upload is indexed, entitled, and logged, providing administrators with comprehensive certainty.

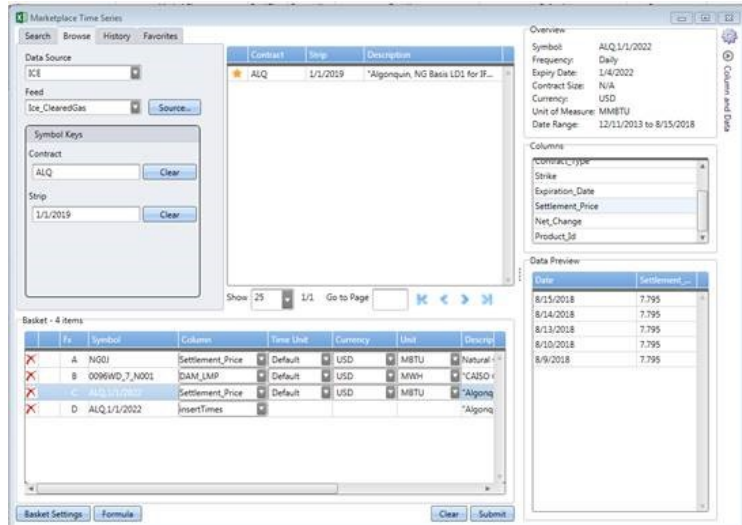
Forward curves

Extract forward curves for flexible multiday ranges (per minute, hourly, daily, monthly, etc.) to perform predictive analysis. The Add-In's table layout is optimized for quick analysis of contract date or price.

The Add-In's interface allows clients to filter and select data from Morningstar's 300+ data sources via an intuitive quick search or user-defined shortcuts. Users can then execute queries resulting in a variety of highly customizable outputs such as forward curves, seasonal analysis, intraday matrices, or hourly tables.

Key Benefits

- ▶ Data Preview
- ▶ Custom Feed Creation
- ▶ Intraday Matrices
- ▶ Units of Measure
- ▶ Custom Formulas
- ▶ Currency Conversion
- ▶ Favorites
- ▶ Search History
- ▶ Upload Templates
- ▶ Refresh Options
- ▶ Metadata
- ▶ Data Correction



Seasonal analysis

Streamline market calculations for smarter year-over-year analyses with the flexibility to align raw time series and custom formulas by using the Add-In's seasonal analysis tool.

Pre-built templates

Immediately access complex spreadsheets with Morningstar Excel Add-In Templates. Templates include various examples of charts and data tables for specific markets, like US power markets, Agriculture, Oil & Refined Products, and Natural Gas.

Units and currency conversion

Convert units of measurement as well as currency from simple drop-down lists, allowing customized assessment of your preferred commodity and energy products.

Insertion time and data correction

Know exactly when a data point is inserted into our systems and access timely data corrections. The transparency the Add-In provides the user with more control over their most valuable data sets.

VBA support and Scheduler tool

Expedite process automation using Excel VBA, supported by the Add-In. In addition, sheet or workbook refreshes can also be set up based on user preferences using the Scheduler tool.

Metadata access

Retrieve metadata on a symbol level to view data specification and categorization. In addition, users can edit metadata or proprietary data by uploading it from the Add-In.

Look no further than the Morningstar Commodity Add-In for a high-powered, rigorously quality-checked tool that brings consolidated market, real-time, and proprietary data into the hands of analysts, risk managers, and anyone else who uses Excel on your team.

Learn More

commoditydata-sales@morningstar.com

+1.312.244.7232 (USA)

+44.(0)203.194.1449 (UK)

morningstarcommodity.com/solutions/add-in/